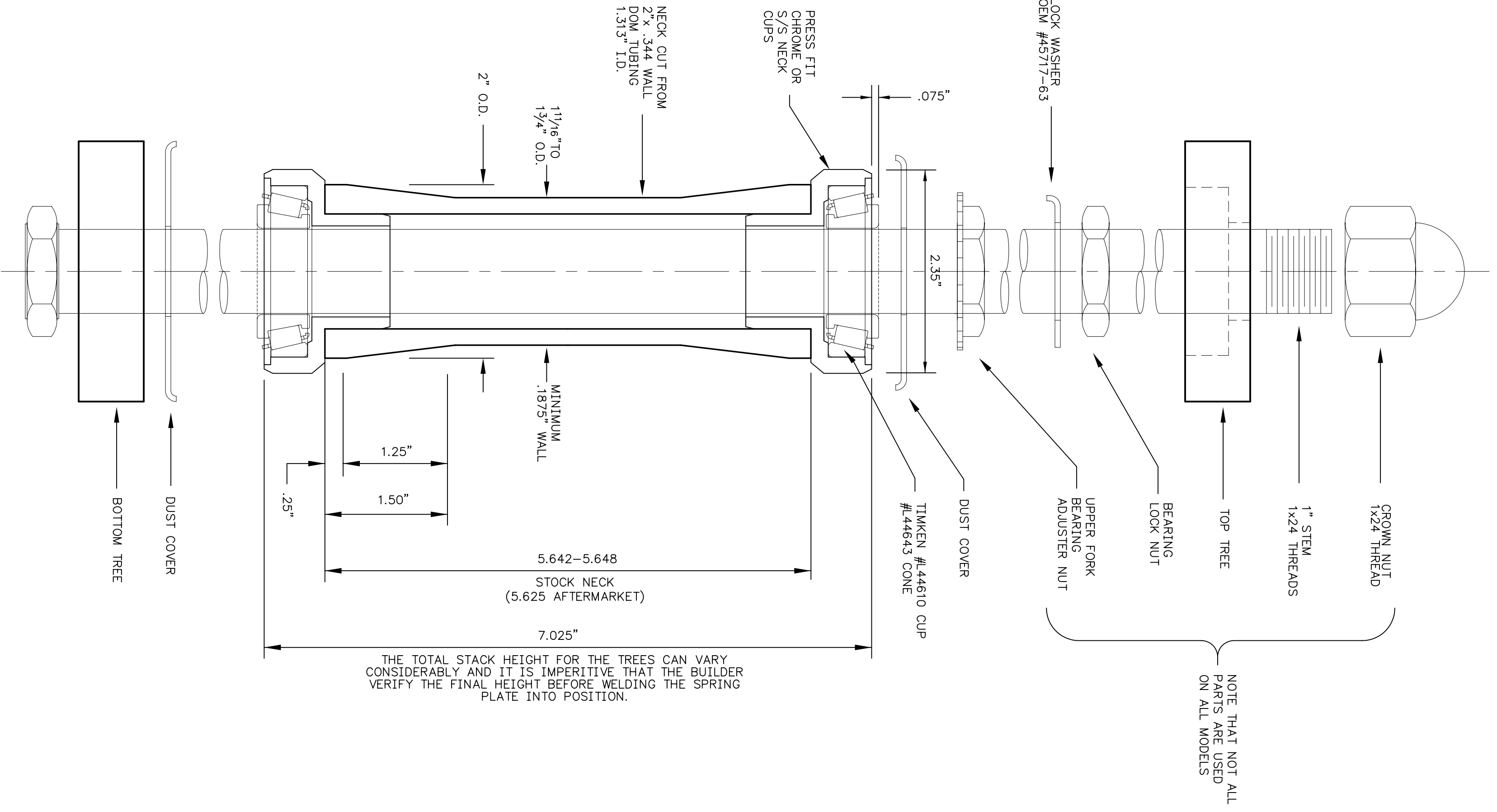
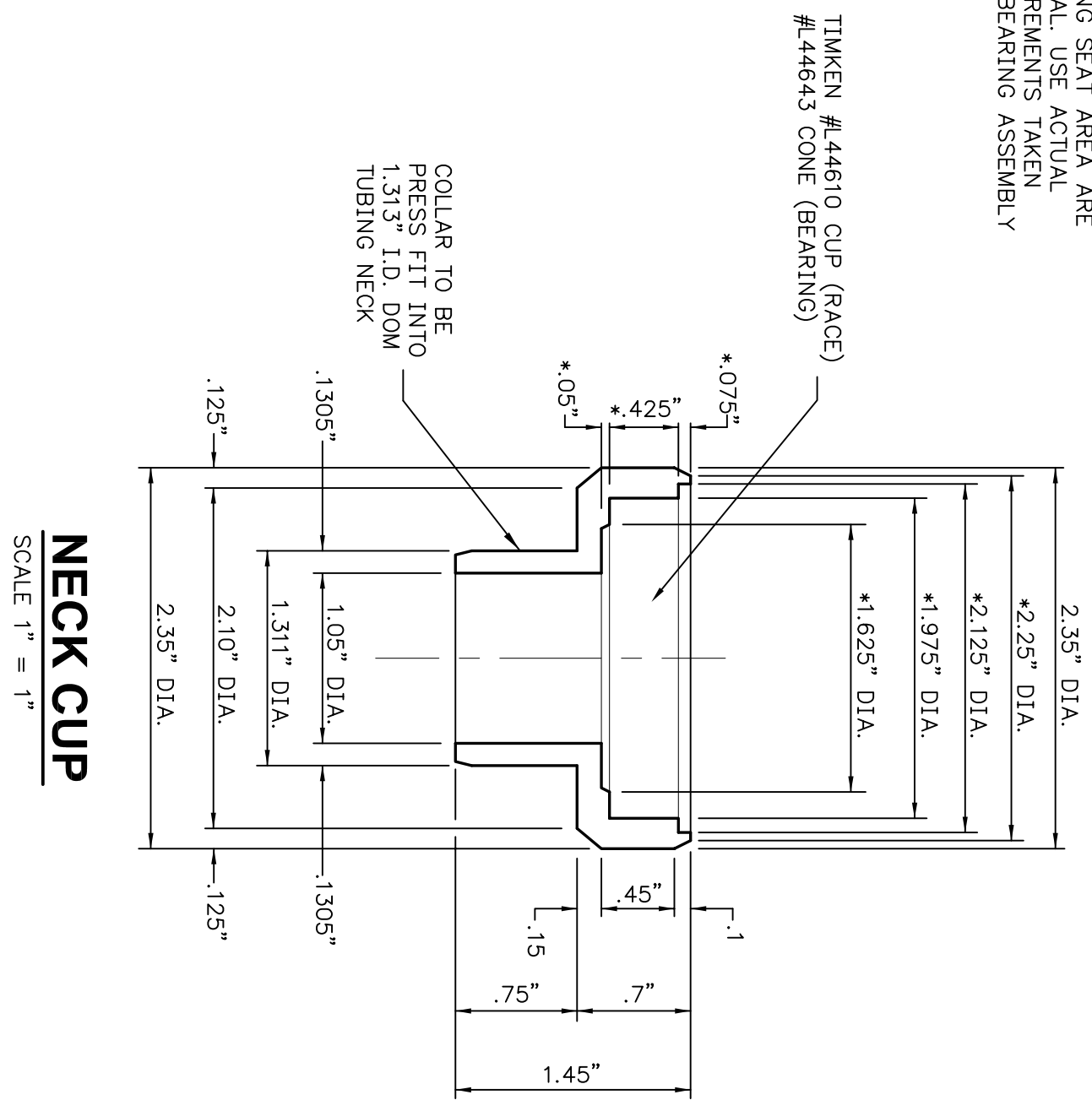
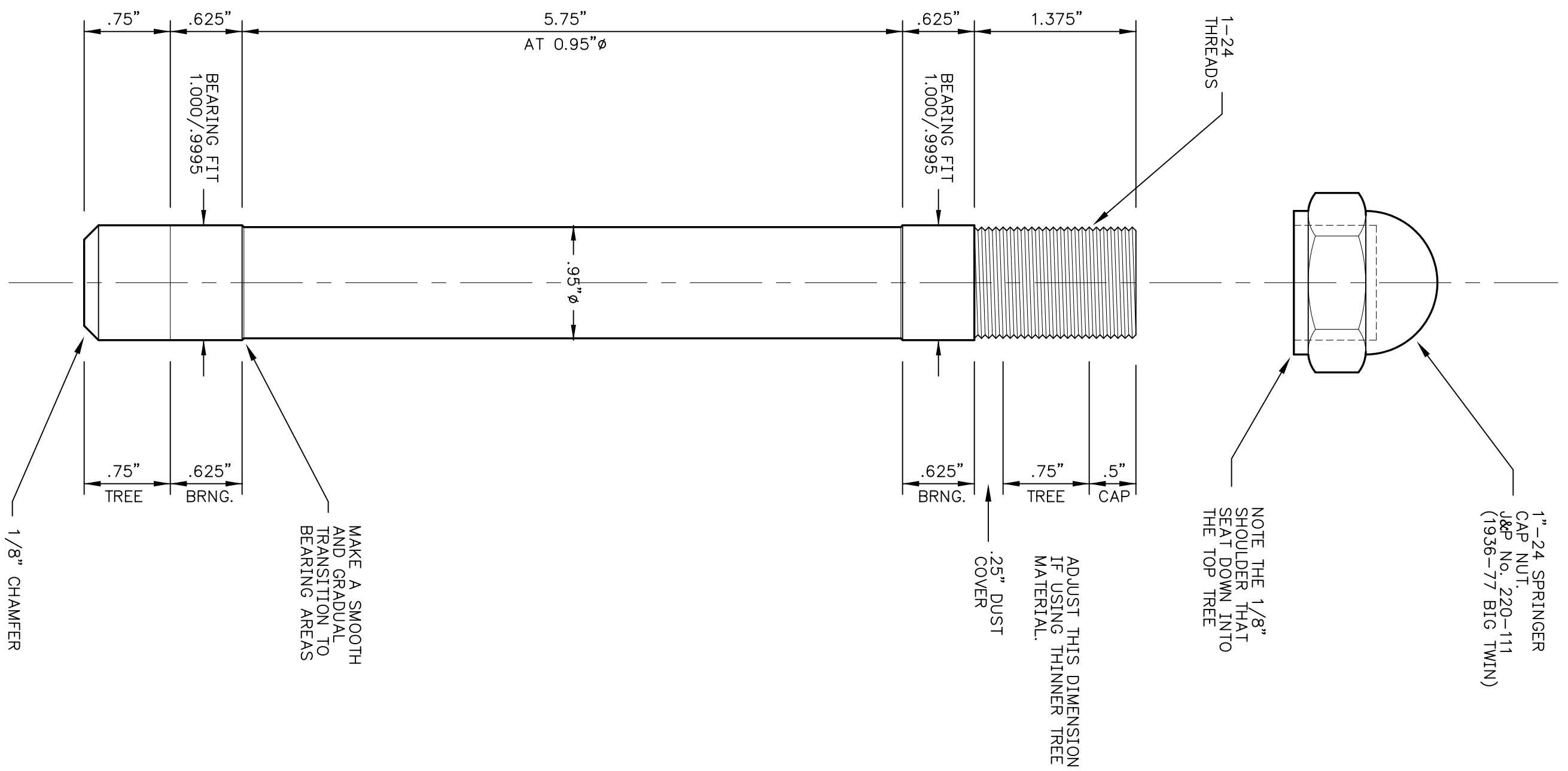


CHOPPER BUILDERS HANDBOOK

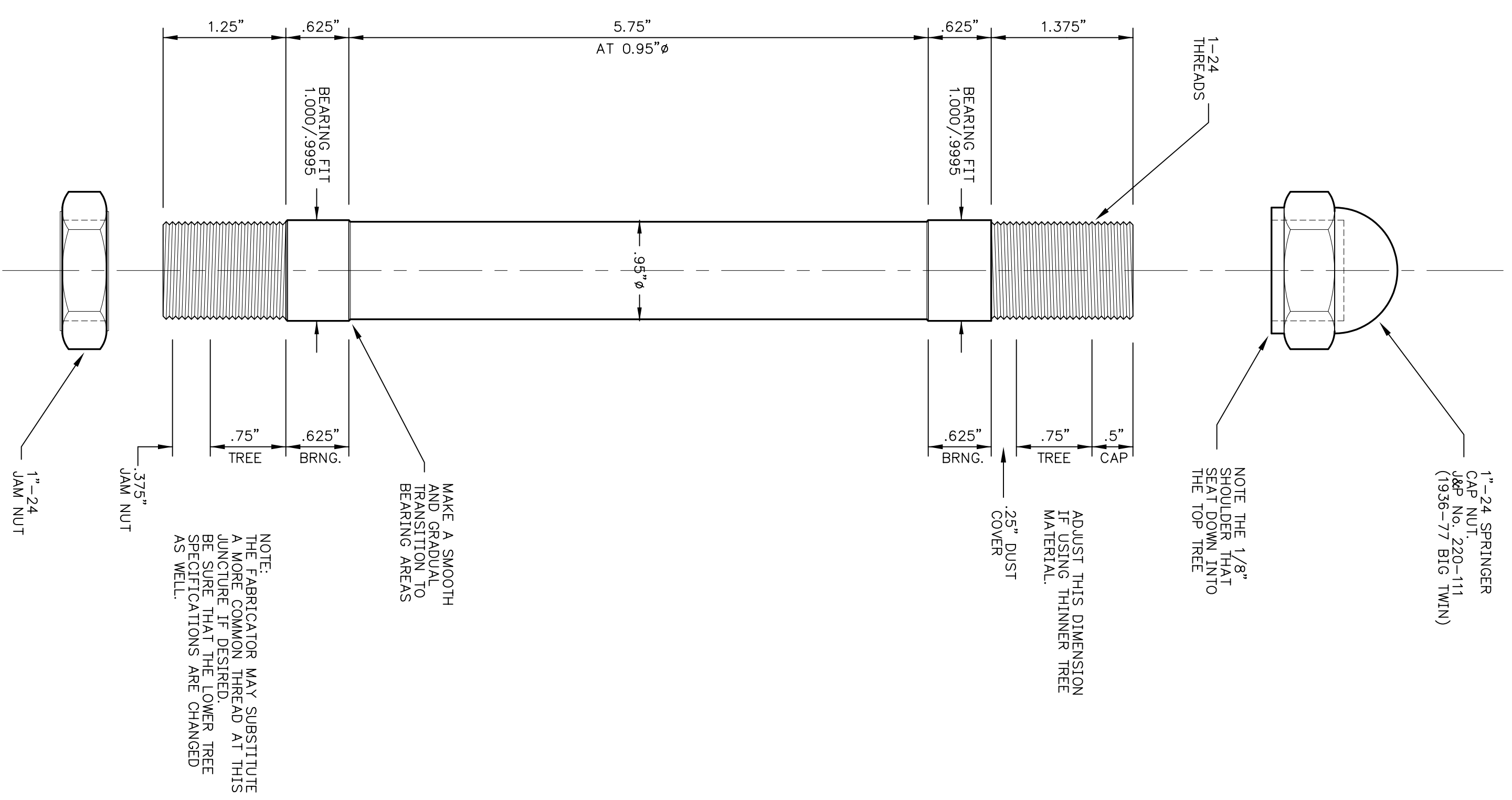
NOTE: * DIMENSIONS SHOWN IN BEARING SEAT AREA ARE MEASUREMENTS TAKEN FROM BEARING ASSEMBLY



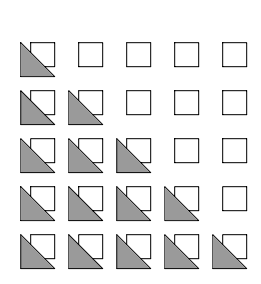
TYPICAL STEERING NECK ASSEMBLY
SCALE 1" = 1"
PROVIDED FOR REFERENCE ONLY



STEERING STEM
SCALE 1" = 1"
WELDED TYPE (1 REQUIRED)
MATERIAL: 1018-1020 MILD STEEL



STEERING STEM
SCALE 1" = 1"
THREADED TYPE (1 REQUIRED)
MATERIAL: 1018-1020 MILD STEEL



GARY W. WEISHAUP

PERFORMANCE ENGINEERING
CHASSIS FABRICATION
FLOWBENCH TESTING
MACHINE WORK
RESTORATIONS

1460 RIVER PARK BLVD.
P.O. BOX 252-3427
MADISON, WI 53725-0252
email: gw@weishaupt.net

Revision	Date
* INITIAL LAYOUT	6-12-01
* AS-BUILT REVISIONS	8-22-02
* AS-BUILT REVISIONS	11-16-03
* AS-BUILT REVISIONS	12-20-03
* BUILDER REVISIONS	2-8-04
* PUBLICATION	11-14-05

Key / Rev

Project Title
CHOPPER BUILDERS HANDBOOK

SPRINGER FORKS

PLAN SF-19-1

Drawn By	GW
Date	11-14-05
Checked By	HC
Date	11-16-05
Scale	1" = 1"
Proj. No.	11-19-1

Sheet Description
STEERING STEM AND STEERING NECK DETAILS

Sheet No.
SF1.8