

CHOPPER BUILDERS HANDBOOK

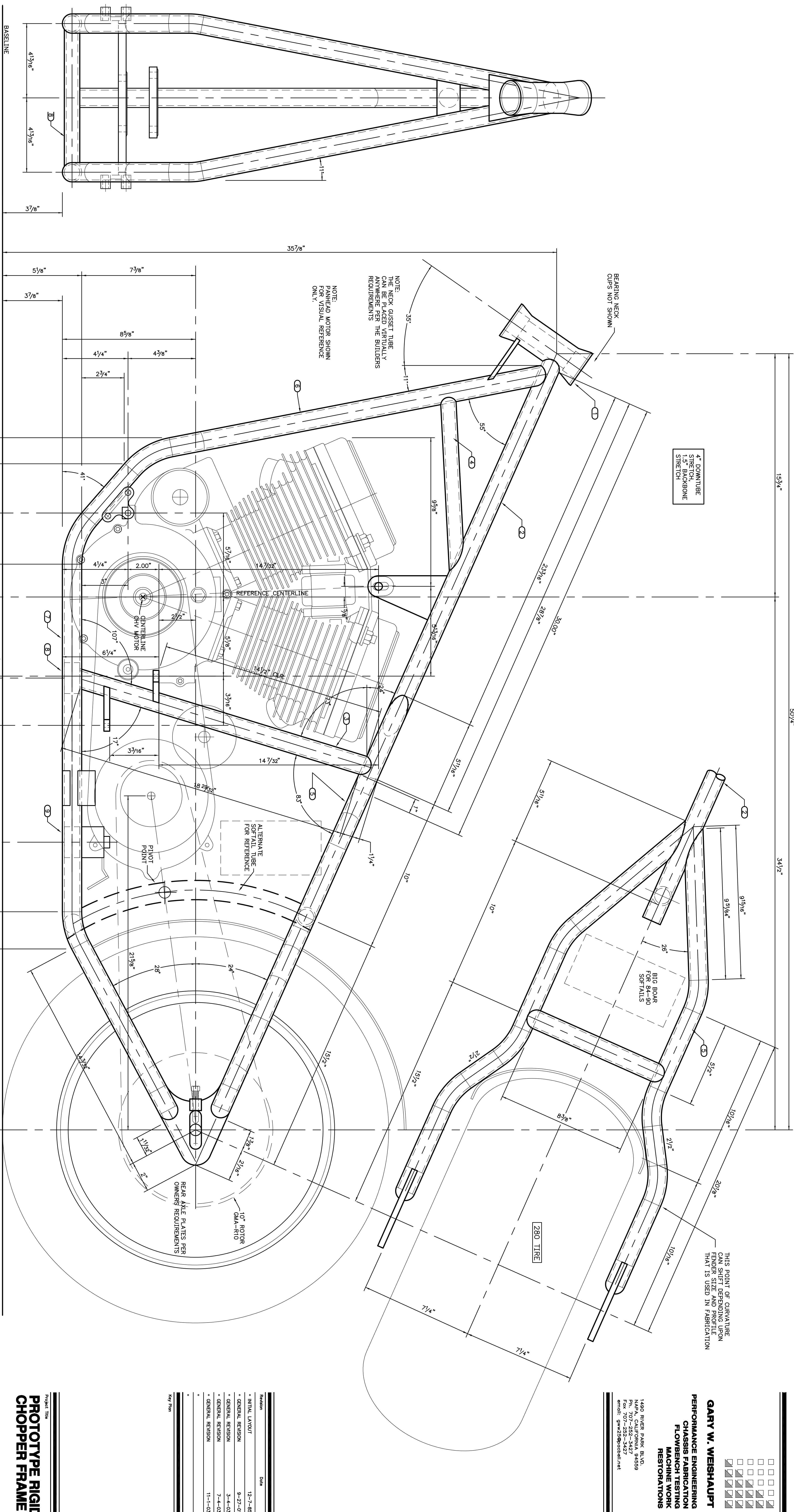
ITEM	DESCRIPTION	SIZE OR EQUAL
(1)	STEERING NECK	KSP OR EQUAL
(2)	BASELINE (TOP TUBE)	1.25x120 EFW
(3)	SEAT POST	1.25x120 EFW
(4)	NECK OUSSET TUBE	1.25x120 EFW
(5)	WISHBONE TUBES (2)	1.25x120 EFW
(6)	DOWN TUBES (2)	1.25x120 EFW
(7)	BOTTOM RAILS (2)	1.25x120 EFW
(8)	SEAT POST BRACE	1.25x120 OR 1.25x120 EFW
(9)	WISHBONE BRACE	1.25x120 EFW
(10)	WISHBONE BRACE	1.25x120 EFW

MATERIAL SCHEDULE

GENERAL NOTES

- THIS SERIES OF DRAWINGS HAS BEEN DEVELOPED FOR THE SOLE PURPOSE OF RESTORING OR REBUILDING A STOCK FRAME. THE RESTORATION OR REBUILDING OF A STOCK FRAME.
- BASE REFERENCE DIMENSIONS SHOWN HEREON WERE DERIVED FROM THE ORIGINAL MANUFACTURER'S DIMENSIONS. DIMENSIONS FOR THE REVISED FRAMEWORK MOTOR MOUNTS (REVISED DIMENSIONS SHOWN W/ A STAR) ENGINES AND NOT HIGH PERFORMANCE MOTORS. CONSULT THE DESIGNER FOR HIGH PERFORMANCE MODIFICATIONS.
- FRAMES AND/OR COMPONENTS DESIGNED HEREON ARE INTENDED TO BE FABRICATED WITH MOTORCYCLE CONSTRUCTION TECHNIQUES. THE DESIGNER WILL NOT BE RESPONSIBLE FOR DAMAGE TO THE RESULT FROM LABORER STANDARD WORKMANSHIP.
- NOTE THAT UNLESS SPECIFIED OTHERWISE ALL TUBING BENDS ARE BASED UPON A 4.5" CENTRELINE RADIUS.

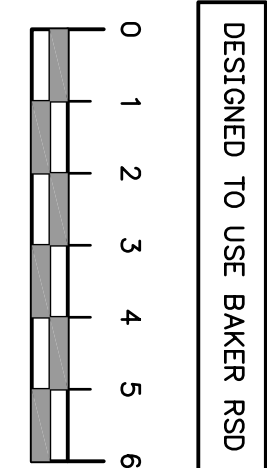
NOTE: SOME BUILDERS USE 2.00" AND 1.25" IN PLACE OF 2.25" AND 1.50" IN THE DIMENSIONS SHOWN W/ A STAR



MOTOR MOUNT - PLAN VIEW - STOCK CHAIN DRIVE

SCALE 3/8" = 1"

NOTE THAT THE WIDTH AT THIS POINT MAY HAVE TO BE ADJUSTED TO BE USED IN FABRICATION



DESIGNED TO USE BAKER RSD
CR-280

Project Title	CR-280
Revision	1.0
Author	G.W.
Checked By	HC
Date	11-1-03
Scale	3/8" = 1"
Project No.	
Sheet Description	RIGID CHOPPER DIMENSIONS DESIGN CR-280RSD

PROTOTYPE RIGID CHOPPER FRAME
CUSTOM RIGID 280 TIRE FRAME

Revision	Date
* INITIAL LAYOUT	10-7-05
* GENERAL REVISION	9-27-01
* GENERAL REVISION	3-4-03
* GENERAL REVISION	7-4-03
* GENERAL REVISION	11-1-03

1480 RIVER PARK BLVD.
 NAPA, CALIFORNIA 94559
 TEL: 707-253-3427
 FAX: 707-253-3427
 EMAIL: gww@chopper.net

GARY W. WEISHAUPT
 PERFORMANCE ENGINEERING
 CHASSIS FABRICATION
 FLAMEBENCH TESTING
 FRAMEWORK RESTORATIONS